

V50 LOW PROFILE SNOW PUSHER

Available widths 84", 96", 108" & 120"

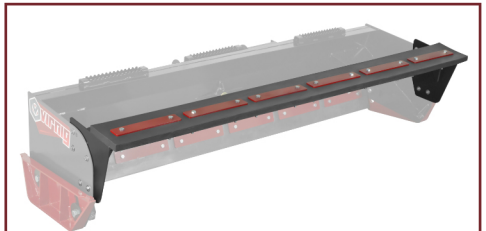
Rubber edge pusher ideal for clearing/piling fresh snow, slush, and other light materials.



27.5"
PUSHER
HEIGHT

915-1035 LB
OVERALL WEIGHT
(VARIES BY MODEL)

GREATER THAN
1500 LB
LOADER OPERATING CAPACITY

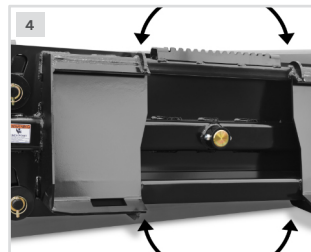
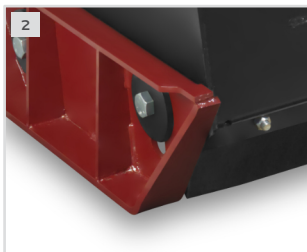


OPTION: RUBBER EDGE PULL BACK

Enables precise snow cleanup along buildings, vehicles, etc.
1 1/2" x 10" reversible, rubber edge allows 6" of total wear.



SHOWN WITH OPTIONAL PULL-BACK



- 1. SHORTER DESIGN FOR BETTER VISIBILITY
- 2. DESIGNED TO AUTOMATICALLY KEEP PUSHER WEIGHT ON EDGE FOR CONSISTENT CLEAN-UP & LESS MAINTENANCE

- 3. REVERSIBLE, SELF-LEVELING AR400 SKID SHOES WITH TAPERED OUTSIDE EDGE TO PROTECT FROM SIDE IMPACTS

- 4. 4° SIDE-TO-SIDE OSCILLATION FOLLOWS UNEVEN SURFACES

| MODEL | LSWP84 | LSWP96 | LSWP108 | LSWP120 |
|-------------------------------|-----------------------|--------------|---------------|---------------|
| Width: Overall / Inside (in.) | 92.3 / 86.0 | 104.3 / 98.0 | 116.3 / 110.0 | 124.5 / 119.0 |
| Overall Height (in.) | 27.5 | | | |
| Depth: Overall / Inside (in.) | 39.5 / 30.0 | | | |
| Pusher Oscillation (degrees) | (+/-) 4 | | | |
| Cutting Edge (in.) | 1 1/2" x 10" Rubber | | | |
| Approximate Weight (lbs) | 915 | 960 | 1005 | 1035 |
| Recommended Loader Capacity | Greater than 1500 lbs | | | |

RUBBER EDGE PULL BACK SPECS:

| MODEL | SPP84 | SPP96 | SPP108 | SPP120 |
|-------------------------------|-------------------|-------|--------|--------|
| Overall Pull Back Width (in.) | 88.0 | 100.0 | 112.0 | 119.0 |
| Inside Pull Back Width (in.) | 86.0 | 98.0 | 110.0 | 117.0 |
| Cutting Edge (in.) | 1 1/2 x 10 Rubber | | | |
| Approximate Weight (lbs) | 210 | 235 | 255 | 275 |