

V60 ANGLE SNOW BLADE

Available widths 72", 84", 96", 108" & 120"



**OPTION:
POLY EDGE**



**OPTION:
RUBBER EDGE**



**OPTION:
PIN-ON WINGS**
Increase blade width by 21 3/4" and reduce spillage for less passes.

| | | | |
|--|------------------------------|---|--|
| TWO-CYLINDER HYDRAULIC ANGLE | 31.0" BLADE HEIGHT | 1020-1225 LB OVERALL WEIGHT (VARIES BY MODEL) | GREATER THAN 1500 LB LOADER OPERATING CAPACITY |
|--|------------------------------|---|--|



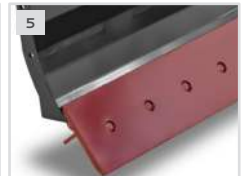
1. 4' SIDE-TO-SIDE OSCILLATION FOLLOWS UNEVEN SURFACES



2. HYDRAULIC CROSSOVER RELIEF VALVE PROTECTS ATTACHMENT BY ANGLING BLADE UPON IMPACT



3. ANGLE BLADE 30° LEFT OR RIGHT FROM INSIDE CAB



4. TRIP EDGE PROTECTS OPERATOR & EQUIPMENT

5. 5/8" x 8" REVERSIBLE STEEL BOLT-ON EDGE ALLOWS 5 1/2" OF WEAR

| | MODEL | SBS72 | SBS84 | SBS96 | SBS108 | SBS120 |
|---|-------|-------------------|-------------------|-----------------------|-------------------|-------------------|
| Width: Overall, Straight / Full Angle (in.) | | 74.0 / 64.0 | 86.0 / 74.0 | 98.0 / 84.0 | 110.0 / 95.0 | 120.0 / 104.0 |
| Overall Height (in.) | | | | 31.0 | | |
| Overall Depth, Straight (in.) | | | | 37.5 | | |
| Blade Angle (degrees) | | | | (+/-) 30 | | |
| Moldboard Thickness (in.) | | | | 0.19 | | |
| Cutting Edge (in.) | | | | 5/8 x 8 Bolt-on | | |
| Blade Oscillation (degrees) | | | | (+/-) 4 | | |
| Cylinder Bore / Stroke (in.) | | | | 2.0 / 8.375 | | |
| Cylinder Pins / Hinge Pins Dia. (in.) | | | | 1.25 / 1.563 | | |
| Approximate Weight (lbs) | | 1020 ¹ | 1075 ¹ | 1130 ¹ | 1185 ¹ | 1225 ¹ |
| Recommended Loader Capacity | | | | Greater than 1500 lbs | | |

¹Weight with steel edge installed.