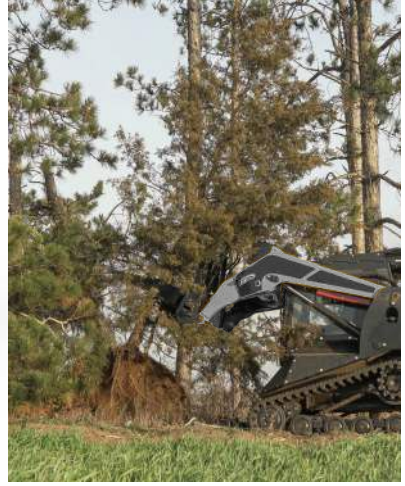


# LANDSCAPING

## DIGGING TREE PULLER

Dig, pull, and remove trees, stumps, and rocks.



**32"**  
JAW OPENING

**14"**  
BASE OPENING

GREATER THAN  
**1800 LB**  
LOADER OPERATING CAPACITY

1. UNIQUE REPLACEABLE CUTTING EDGES FOR PUNCHING THROUGH HARD SOIL, CUTTING ROOTS & GRUBBING TREES
2. FIXED JAW PROVIDES MAX STRENGTH & HELPS CENTER OBJECTS WHILE APPROACHING
3. 1" THICK AR400 SERRATED JAWS & REPLACEABLE SERIES 23 TEETH FOR AGGRESSIVE DIGGING
4. TREE STABILIZING SERRATIONS ON GUARD TOP & JAW BASE
5. 3/8" THICK GUARD ANGLED FORWARD & ON CORNERS TO SHED FALLING TREES AWAY FROM LOADER
6. 3.5" DIAMETER CYLINDER PROTECTED INSIDE FRAME & FROM STRESS WITH HARD STOP
7. OPEN BACK DESIGN FOR QUICK CYLINDER ACCESS & DIRT CLEANOUT
8. 3" TALL REAR BACK PLATE FOR EFFECTIVE SOIL BACK-DRAGGING
9. OPTIMIZED HOSE ROUTING SAFEGUARDS HOSES FROM POTENTIAL DAMAGE

MODEL	DTP
Overall Width (in.)	50.4
Overall Height (in.)	48.4
Overall Depth (in.)	58.0
Guard Height / Width (in.)	27.4 / 46.4
Max Jaw Opening: Front / Base (in.)	32.0 / 14.0
Space Between Digging Teeth (in.)	6.2
Jaw Thickness (in.)	1.0 <sup>1</sup>
Max Digging Depth (in.)	42.5
Cylinder Bore / Stroke (in.)	3.5 / 8.0
Cylinder Pins / Pivot Pins (in.)	1.6 / 2.2
Approximate Weight (lbs)	830
Recommended Loader Capacity	Greater than 1800 lbs

<sup>1</sup>Laminated 1/2" AR400 Plate (150,000 PSI Min Yield Strength) & 1/2" Grade 50 Plate (50,000 PSI Min Yield Strength).